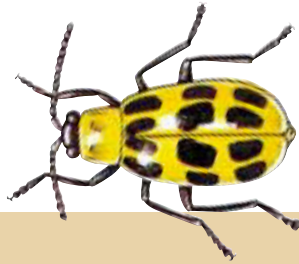


Crop	Diseases	Insects Controlled or Repelled
Cabbage, broccoli, cauliflower, brussel sprouts	Downy mildew, leaf spot	Imported cabbage worm, cabbage looper, diamond back moth, aphids
Carrots	Downy mildew, leaf spot	Flea beetle, thrips, aphids, carrot rust fly
Celery	Early and late blights, leaf spot	Parsnip webworm, two-spotted spider mite, tarnished plant bug, carrot rust fly, aphid
Cucumber, melons, pumpkins, squash	Angular leaf spot, downy mildew, powdery mildew, gummy stem blight, anthracnose, leaf spots, scab	Pickleworm, melonworm, cucumber beetle, young squash bug, aphids, two-spotted mite
Potatoes	Early and late blights	Colorado potato beetle, flea beetle, leafhopper, young tomato hornworm, tomato pinworm, tarnished plant bug, stink bug, aphids, thrips, white fly, mealybugs
Tomatoes, eggplant	Early and late blights, anthracnose, bacterial spot, leaf spots, nail head rust, Septoria and Stemphylium leaf mold	
Strawberries	Leaf spot, downy mildew, leaf blights, leaf scorch	Leaf roller, weevil, red spider, spittlebug
Apples	Bitter rot, black rot, blotch, powdery mildew	Aphid, leafhopper, tent caterpillar, European apple sawfly, Japanese beetle, red spider mite, codling moth, apple maggot
Apricots, cherries (sour)	Brown rot	Black cherry aphid, mealy plum aphid, cherry fruit fly, Japanese beetle, tent caterpillar, orange tortrix, tussock moth
Pears	Scab, leaf blights	Codling moth, plum curculio, aphid, leafhopper, pear psylla
Arbor vitae, asters	Blights, leaf spots	Red spider, flea beetle, thrips, Japanese beetle, leaf roller, birch leaf miner, lace bugs, tent caterpillar
Oaks	Leaf blister (Taphrina)	
Azaleas, begonias, rhododendrons	Leaf blights, leaf scorch, leaf spot	Aphids, mites, rose chafer, Japanese beetle, flea beetle, thrips, leafhopper, red spider, and repels bagworms
Chrysanthemums	Botrytis blight, downy mildew, leaf spots	
Flowering shrubs, maples, hawthorne, gardenias, marigolds, phlox, stocks	Leaf spots	
Roses	Anthracnose, black spot, downy and powdery mildews, leaf spots, stem canker	



Rotenone-Copper Dust

R · e · a · d · y t · o U · s · e



Insecticide-fungicide dust for use on vegetables, fruit trees and flowers as listed.

EPA Est. No. 4-NY-1

EPA Reg. No. 4-30

ACTIVE INGREDIENTS:	
Copper (in basic Copper Sulphate) expressed as metallic	7.00%
Rotenone	0.75%
Other Cube Resins	1.50%
OTHER INGREDIENTS	90.75%
TOTAL	100.00%

KEEP OUT OF REACH OF CHILDREN

CAUTION

See back panel cautions.

BONIDE ROTENONE-COPPER DUST
EPA Reg. No. 4-30

PRECAUTIONARY STATEMENTS—HAZARDS TO HUMANS AND DOMESTIC ANIMALS—CAUTION:

Harmful if swallowed. Avoid contact with eyes, skin or clothing. Avoid breathing dust or spray. Wash thoroughly after handling. Wash contaminated clothing before reuse. Do not apply to food crops within 1 day of harvest. May cause skin sensitization in certain individuals.

FIRST AID—If swallowed: Call a physician or Poison Control Center. Drink 1 or 2 glasses of water and induce vomiting by touching finger to back of throat. **If inhaled:** Remove person to fresh air. **If in eyes:** Flush with plenty of water. Get immediate attention. **If on skin:** Remove contaminated clothing and wash affected areas with soap and water.

ENVIRONMENTAL HAZARDS—This pesticide is extremely toxic to fish. Do not apply directly to water. Runoff and drift from treated areas may be hazardous to aquatic organisms in adjacent sites. Do not contaminate water when disposing of equipment washwaters.

DIRECTIONS FOR USE: It is a violation of Federal law to use this product in a manner inconsistent with its labeling. **USE RESTRICTIONS:** To control the insects and diseases on the plants listed in the table. Do not apply to food crops within one day of harvest. If blossoms are in full bloom, protect pollinators by using fungicide only, such as Bonide Copper dust. For home garden use only.

STORAGE AND DISPOSAL—

Storage: Store only in original container in a cool dry place inaccessible to children and pets. **Container Disposal:** Do not reuse empty container. Rinse thoroughly. Securely wrap in newspaper and discard in trash.

Bonide Rotenone-Copper Dust—To control certain insects and to control or prevent certain blights, leaf spots, mildew and certain other diseases on listed plants.

HOW TO APPLY:

As a Dust: This can is a squeeze-type duster. Shake can to fluff powder. Press sides of can with fingers, using rapid motion for fog effect. Cover foliage with a thin film of dust, both top and undersides of leaves. Depending on foliage density, 14 oz. should cover approximately 875 sq. ft.

As a Spray: Mix 14 oz. to 4 1/2 gallons of water, or 1 tablespoonful to 1 quart of water. Add powder to small quantity of water first making a paste, then add desired amount of water. Spray to cover all parts of exposed plant both top and undersides of leaves.

WHEN TO APPLY: FOR INSECTS: Apply when insects appear on plants. FOR DISEASE: Apply when plants appear above soil. **WHEN TO REAPPLY:** Repeat at 7 to 10 day intervals and after rains.

Buyer's Guarantee Limited to Label Claims.

BONIDE PRODUCTS, INC.
ORISKANY, NY 13424